



beautiful like nature, individual & limitless

DECKING & FACADE

100% wood-free | water and slip resistant | splinter-free

Many Reasons Why...



Resysta material impresses with its unique properties not only with its longevity but also in feel, look and the diversity of potential applications for decking, facade, soffits, ceilings, screen walls and trellis.

Due to the high material density Resysta is especially resistant to rain, snow and ice. Does not swell, splinter or crack. Resysta differs from other materials, because Lignin is the substance that causes wood to gray when exposed to weather influences. Resysta does not contain any wood components and will therefore not gray. Thanks to certified durability classification 1 against fungal decay - Resysta meets highest demands in this regard.

Resysta has been especially developed for outdoor areas. It withstands climatically challenging conditions and aggressive changes in weather, environment and temperature. Thanks to these exceptional properties, Resysta represents the ideal material for all exterior and interior designs.

The polar properties of Resysta allow for the

perfect adherence of Resysta stains – the ideal precondition for long-lasting color design of the Resysta products. Color chipping and flaking of the Resysta surface cannot occur. The Resysta stains contain color pigments of the highest quality standard and are highly resistant to UV exposure.

Resysta Advantages

- Owing to Resysta's polar properties, Resysta stains perfectly adhere to the surface.
- Resysta does not absorb water. Therefore flaking of the stain does not occur.
- no graying of the surface
- barely visible changes in color, even after many years
- class A fire rating per ASTM-E84
- meets WUI requirements

The Material



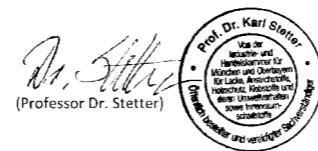
»Resystais extremely resistant and provides for an especially beneficial eco-balance«

Technical and ecological assessment of the Resysta material: Resysta looks like wood and offers high mechanical strength, thermal stability as well as chemical resistance. Unlike wood, Resysta is swell-, splinter- and crack-free, does not grey and withstands fungal decay. Products made with Resysta are therefore very durable without requiring any special care and very low maintenance.

This material is a real alternative to tropical wood.

Owing to these characteristics, Resysta is especially suitable for outdoor use, e.g. it can be worked for garden furniture, outdoor decking and facades. Simply everywhere, high strain, aggressive weather and environmental influences become effective.

Furthermore, products made with Resysta provide for an especially beneficial eco-balance.



Prof. Dr. Karl Stetter Chemist with diploma
Specialist in varnishes, surface coating compositions, wood preservation, adhesives and their effect on the environment as well as interior harmful substances: Officially appointed and authenticated by the Chamber of Commerce and Industry for Munich and Upper Bavaria

Resysta outshines in...



PRODUCT PROPERTIES

- UV-resistance
- weather resistance
- water resistance
- salt- and chlorine-water resistance
- no cracking
- no pest infestation or fungal decay
- Class A Fire Rating according ASTM E84



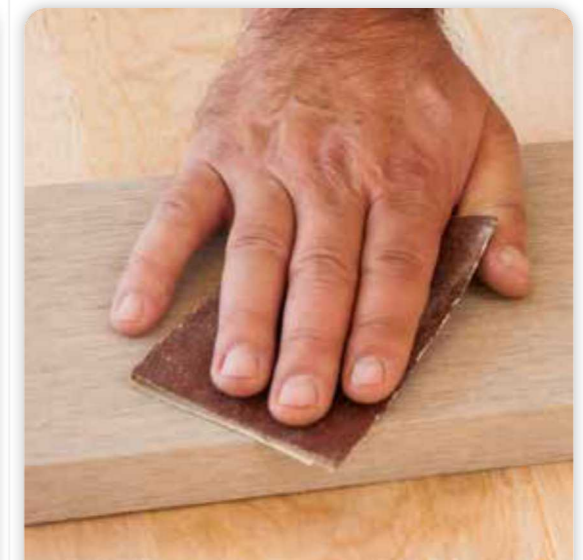
SURFACE AND DESIGN

- real wood feel and appearance
- slip resistant
- no splintering
- individual color scheme



HANDLING

- simple installation
- customary tools
- easy-to-refinish











SUSTAINABILITY

- no rotting
- 100% recyclable
- easy-care

Resysta is not a wood plastic composite (WPC) and yet surpasses all known alternative wood materials in feel and durability!

Decking Items

 <p>RES010612 Platinum DECKING BOARD PLATINUM (W x H x L) 1" x 5 1/2" x 12'</p>	 <p>RESSB010612 Platinum STARTER BOARD PLATINUM (W x H x L) 1" x 5" x 12'</p>	 <p>RESF12812 FASCIA FASCIA BOARD (W x H x L) 1/2" x 8" x 12'</p>
 <p>RESDOWEL3 DOWEL DOWEL (Ø x L) 1/2" x 3'</p>	 <p>RESCLIPSS125 START / END CLIP SS1</p>	 <p>RESCLIPS200 DECKING CLIP</p>

 <p>RESCPH120412 SIDING PROFILE 4" (W x H x L) 1/2" x 4" x 12'</p>	 <p>RESCPH120612 SIDING PROFILE 6" (W x H x L) 1/2" x 6" x 12'</p>	 <p>RESCPH011208 SIDING PROFILE 12" (W x H x L) 1" x 12" x 8'</p>
 <p>RESDP340612 6" DECOPROFILE (W x H x L) 3/4" x 5-1/2" x 12'</p>	 <p>RESLP340612 6" LUSSOPROFILE (W x H x L) 3/4" x 6" x 12'</p>	 <p>RESDCH343412 6" DECOCORNER (W x H x L) 3/4" x 3/4" x 12'</p>
 <p>RESRPH340312 RHOMBUS SIDING PROFILE (W x H x L) 3/4" x 3" x 12'</p>	 <p>RESCPSS25 1" TEC SHOULDER STAINLESS STEEL SIDING SCREW</p>	

Siding Items

Cladding Items



RESP3423412
WALL CLADDING
2 CHANNELS
(W x H x L) 13/16" x 2 3/4" x 12'



RESP1223412
WALL CLADDING
2 CHANNELS THIN
(W x H x L) 5/8" x 2 3/4" x 12'



RESP1231212
WALL CLADDING
3 CHANNELS
(W x H x L) 5/8" x 3 1/2" x 12'



RESP340612
WALL CLADDING
4 CHANNELS
(W x H x L) 13/16" x 5 1/2" x 12'



RESP340812
WALL CLADDING
7 CHANNELS
(W x H x L) 13/16" x 7 7/8" x 12'



RESCLIPHF100
FACADE CLIP



RESCLIPHFL50
FACADE LONG CLIP

Soffit / Ceiling Items



RESCPH120412
SIDING PROFILE 4"
(W x H x L) 1/2" x 4" x 12'



RESCPH120612
SIDING PROFILE 6"
(W x H x L) 1/2" x 6" x 12'



RESCPH011208
SIDING PROFILE 12"
(W x H x L) 1" x 12" x 8'



RESLP340612
6" LUSSOPROFILE
(W x H x L) 3/4" x 6" x 12'



RESDP340612
6" DECOPROFILE
(W x H x L) 3/4" x 5-1/2" x 12'



RESCPSS25
1" TEC SHOULDER
STAINLESS STEEL
SIDING SCREW

Screen Walls & Trellis Items



RESGC11211212
CLADDING
1CHANNEL THICK
(W x H x L) 11/2" x 11/2" x 12'

RESGC11211212N
CLADDING
1CHANNEL THICK AL
(W x H x L) 11/2" x 11/2" x 12'

RESGC11223412
CLADDING
2 CHANNELS THICK
(W x H x L) 11/2" x 2 3/4" x 12'

RESGC11223412N
CLADDING
2 CHANNELS THICK AL
(W x H x L) 11/2" x 2 3/4" x 12'



RESGC020612
CLADDING
4 CHANNELS THICK
(W x H x L) 11/2" x 5 1/2" x 12'

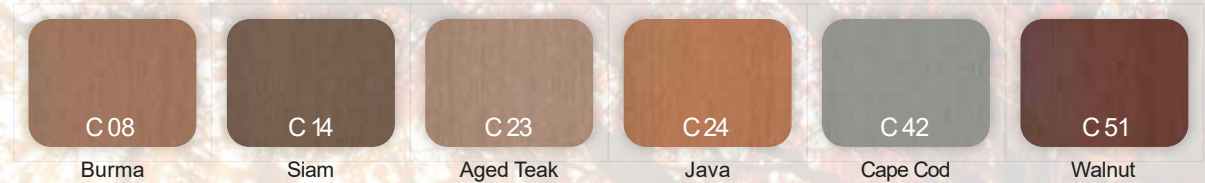
RESGC020612N
CLADDING,
4 CHANNELS THICK AL
(W x H x L) 11/2" x 5 1/2" x 12'

RESUB112234
ALUMINIUM U-BRACKET
(W x H x L) 1-1/2" x 1-1/2" x 2-3/4"

RESUB112112
ALUMINIUM U-BRACKET
(W x H x L) 1-1/2" x 1-1/2" x 1-1/2"

Color & Protection

Chose from beautiful 6 standard stain colors.

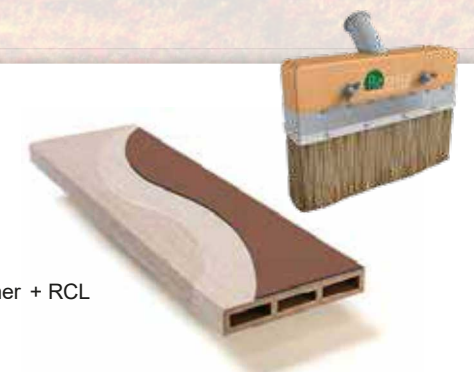


Resysta Color Concept, special colors



Surface treatment procedure

ResystaColor Concept provides unique opportunity to create stunning projects with the variety of over 30 colors. We pride ourselves to offer the only composite product on the market which can be refinished based on customers color preference.



Primer + RCL

RESYSTA BASE PRIMER RBP

Primer: Is an aqueous, colorless primer based on an acrylate dispersion. Resysta RB Primer conveys a good adhesion, closes the surface against ingress of water, and facilitates even application of the transparent colored Resysta RCL stain. Resysta RB Primer can be used for indoor and outdoor areas.

RESYSTA COATING LAYER RCL

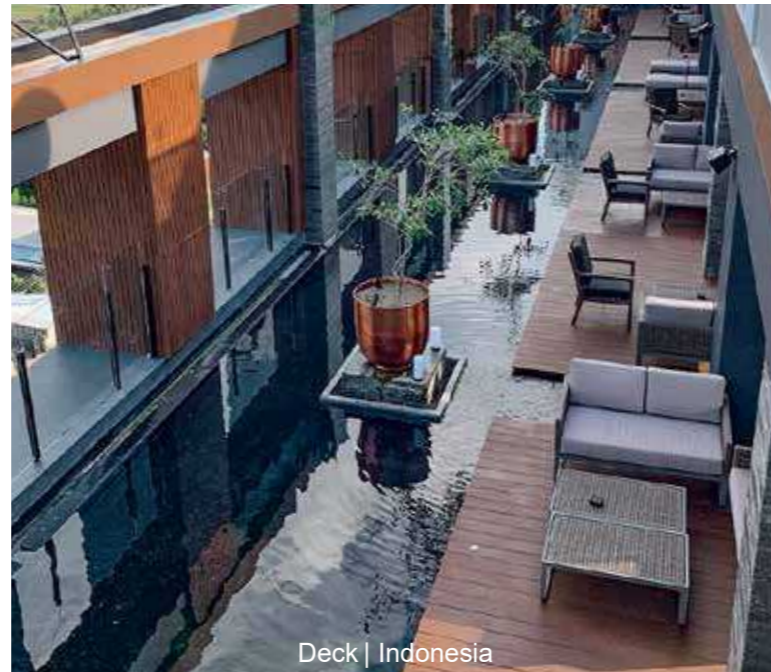
Coating: Is a water-based 1-component protective stain for color designing of Resysta surfaces. RCL finish is specially designed for indoor and outdoor use and features very good weather- and water-resistance. Scope of application is decorative color design for Resysta facades, decking, decking and soffits.

Decking Applications

All of its very exceptional properties make Resysta extremely resistant to weather influences like sun, rain, snow and ice, salt- and chlorine-water. Resysta does not swell, crack, splinter or rot.



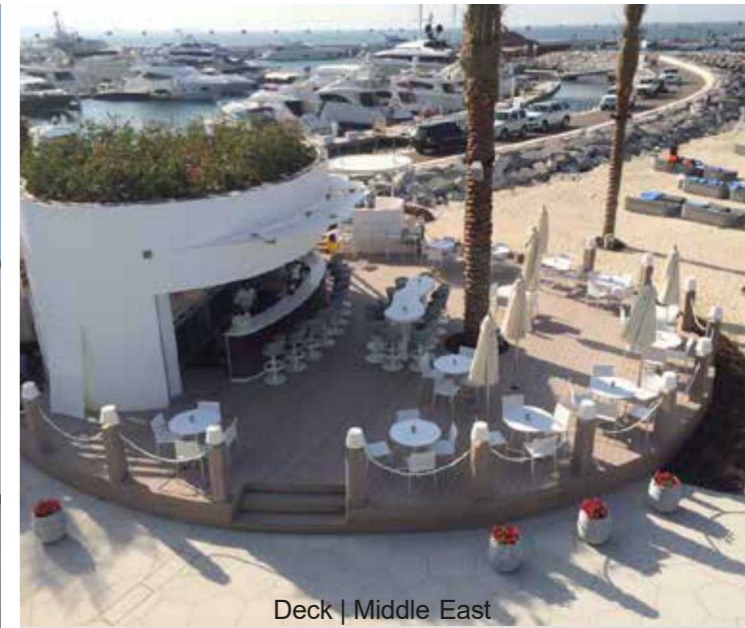
Deck | USA



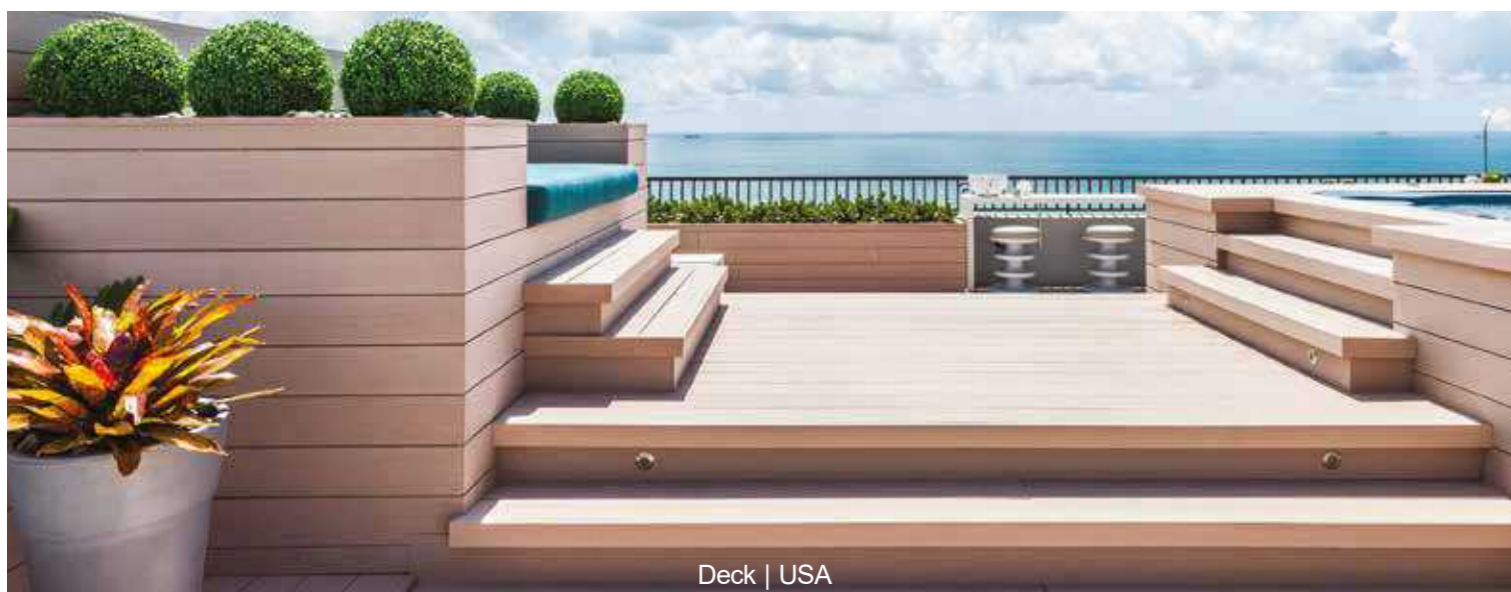
Deck | Indonesia



Deck | USA



Deck | Middle East



Deck | USA



Deck | Germany



Siding & Cladding Applications

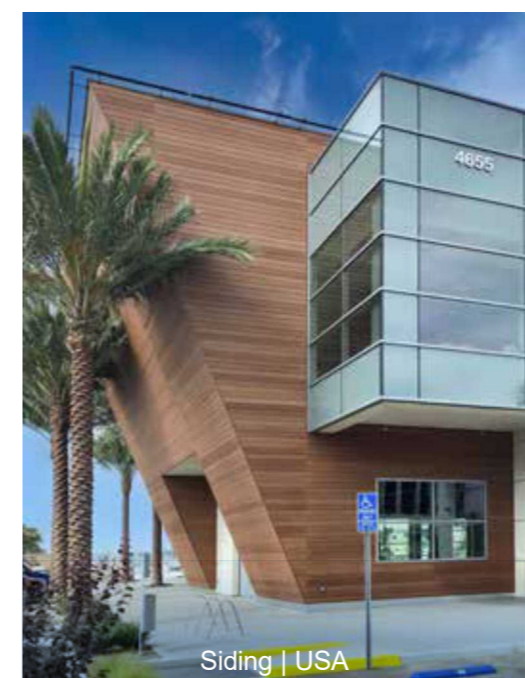
For many years siding has been the most traditional form of decorating and waterproofing building walls. Therefore Resysta siding is a perfect solution. With the natural look and feel of wood followed by the minimal maintenance requirements it won over the architects, homeowners and contractors all over the USA.



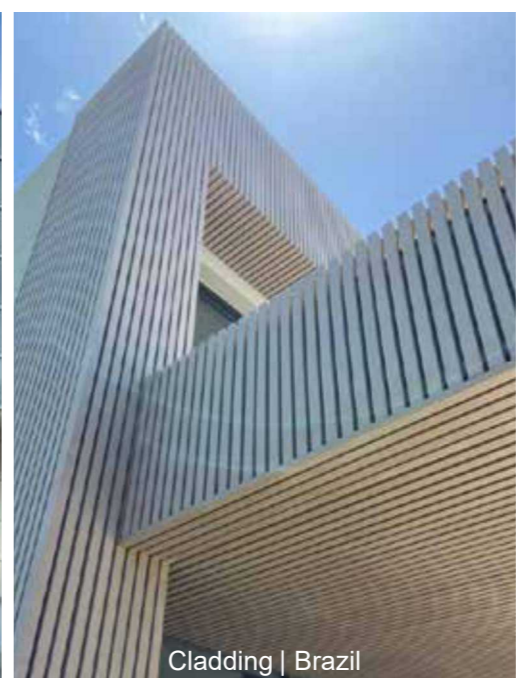
Indoor Siding | USA



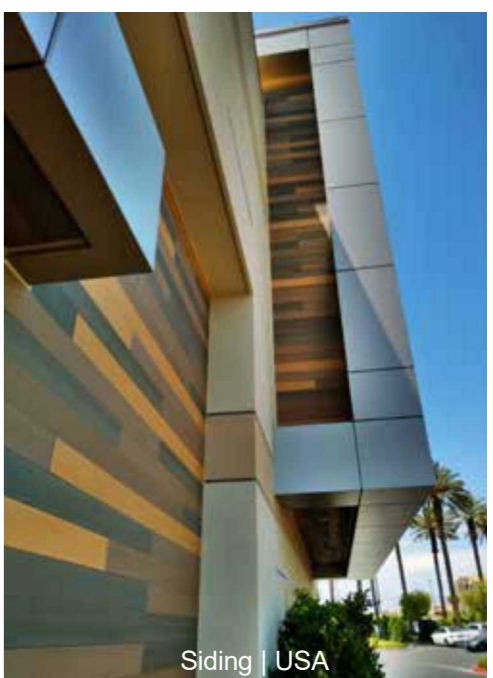
Cladding | Thailand



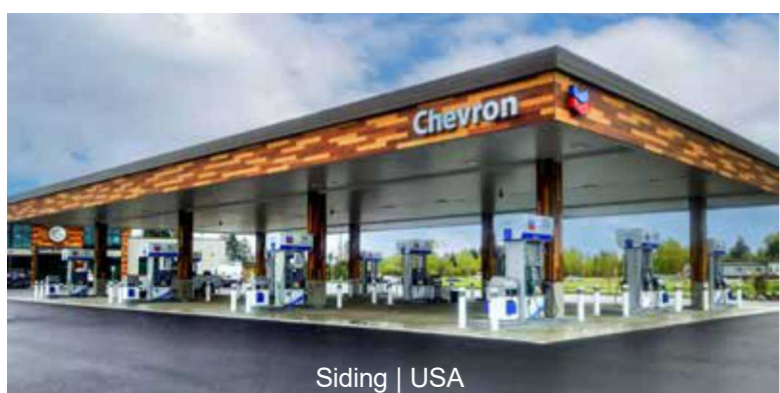
Siding | USA



Cladding | Brazil



Siding | USA



Siding | USA

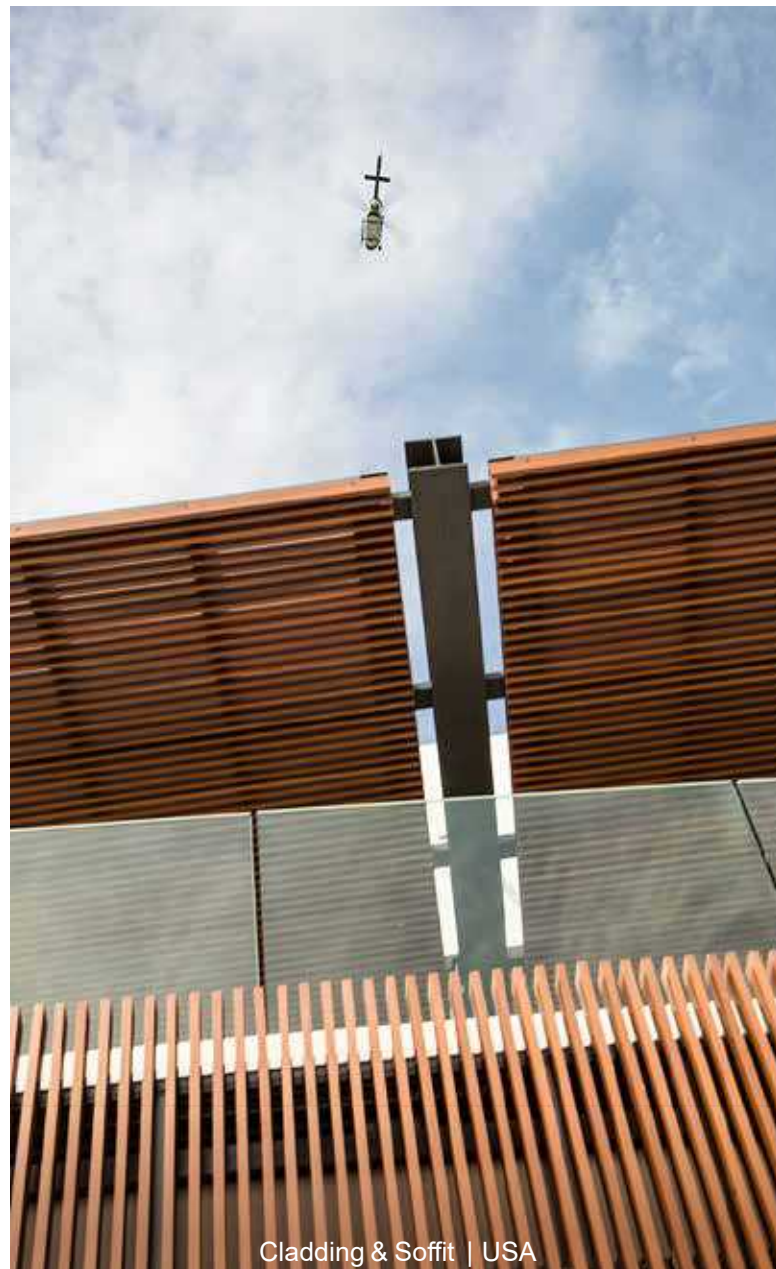


Siding | USA



Decking, Screen Wall, Soffit & Cladding | USA

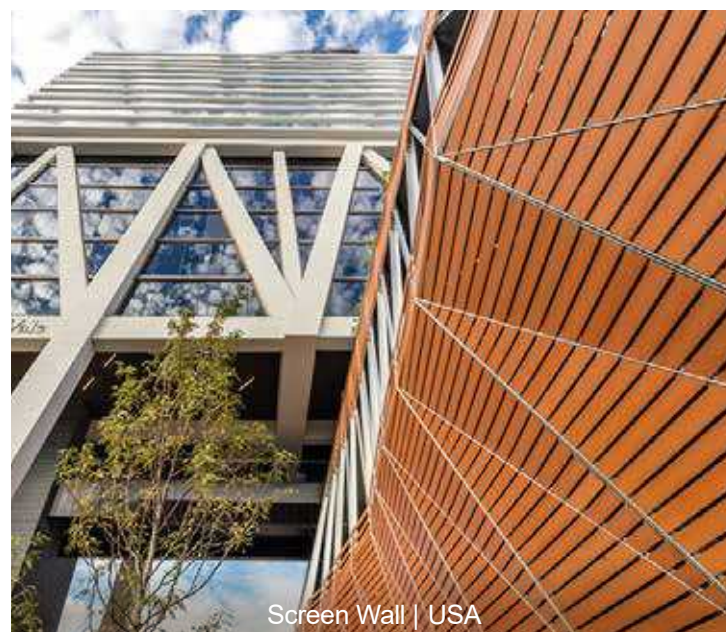
Soffit / Ceiling / Screen Walls & Trellis Applications



Cladding & Soffit | USA



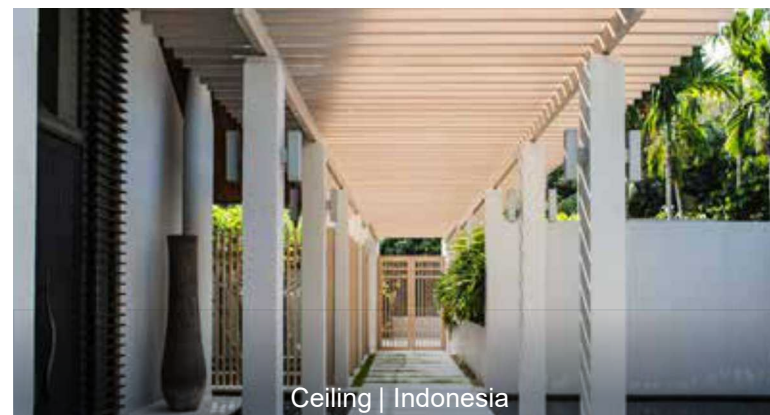
Screen Wall & Ceiling | USA



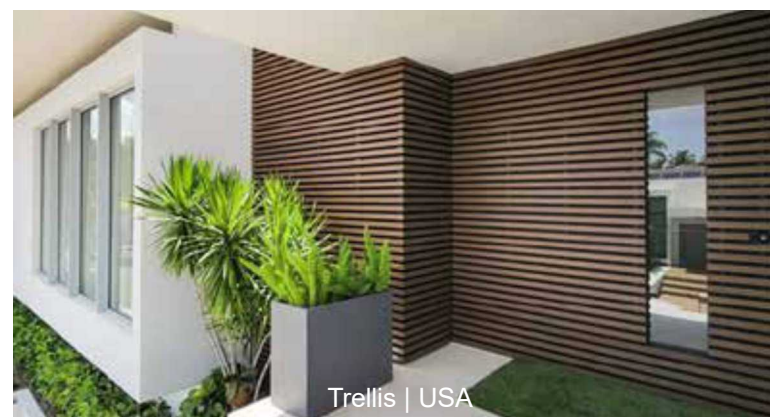
Screen Wall | USA



Trellis | USA



Ceiling | Indonesia



Trellis | USA



Soffit | Great Britain



Screen Wall | USA

Innovation

We at Resysta believe in keeping our natural resources. Resysta has the visual appearance, feeling and structure of tropical wood, with absolutely no wood in it. We use a renewable resource that is replaced in short cycles – rice husks. Resysta, a sustainable material provides the benefits of a wood-look product, but without the negative aspects of wood. No greying or cracking. Recyclable, water resistant and can be stained in over 30 colors. Enjoy Resysta and proudly know, along with us, you are preserving the world in which we live.

Learn more at www.resystausa.com

FAQs

IS IT DIFFICULT TO INSTALL RESYSTA?

No, Resysta can be installed as easy as any other traditional building products. Please observe the instructions given in our installation guides and videos.

HOW TO MAINTAIN RESYSTA?

For general cleaning of the surface down dishwashing liquid and water should remove most surface dirt.

WHY IS RESYSTA SO DURABLE?

Owing to its unique composition of ingredients, Resysta is very durable, sustainable and therefore environment-friendly. Resysta does not contain any wood components, which could result in rotting and splintering.

WHY DOES RESYSTA NOT CRACK?

Resysta on the one hand does not absorb moisture and on the other hand does not release any moisture. Therefore, crack-formation cannot take place and dimensional changes are limited to thermal expansion.

DOES THE COLOR LIGHTEN UP OR GRAY AFTER SOME TIME?

Resysta will not gray. However, in the course of time a certain fading – depending on environmental conditions – may occur. This can be slowed down by using our stains. The colored surface can be refreshed at any time.

Further information is provided at www.resystausa.com or at your authorized dealer.

Properties

Density	ASTM D2395:2002	approx. 1.46 g/cm ³
Coefficient of Linear Thermal Expansion	ASTM D696	3.6x10 ⁽⁻⁵⁾ 1/K
Water Absorption & Humidity	ASTM D1037:2006a	Little up to no water absorption (only surface moistening)
Weathering and UV Resistance	QUV Test	With glaze treatment, Resysta surfaces are extremely resistant
Slippery Test (wet area barefoot)	DIN 51097	Class C (highest class)
Fire Rating	EN ISO 11925-2	B2 (E) - standard flammable (with additional treatment B1 reachable)
Fire rating according NFPA (US Norm)	ASTM E84	Class A (flame propagation 25, smoke emission 450)
Fire rating (British standard)	BS 476 Teil 6&7	class 1
Durability - Resistance against wood-destroying fungi	DIN ENV 12038:2002	no attack by the test fungi, highest durability class 1 (very durable)
Emission	LGA-tested safety & contamination	LGA test passed
Brinell Hardness (HB)	EN 1534	11,762 psi
Coefficient of sliding and friction μ untreated	EN 13893	0,46
Coefficient of sliding and friction μ with 2K varnish	EN 13894	0,52
Axial Withdrawal Force (of Screws)	EN 320:2011-07	5777 N
Thermal Conductivity (μ)	EN 12664	0.199 W/(mK)
Water Vapour Transmission	DIN EN ISO 12572	$\mu=1300 \rightarrow$ sd 7.22m diffusion blocking
Bending Strength	ISO 178	6,672 psi
Bending Modulus	ISO 178	558,395 psi
Tensile Strength	ISO 527	3,162 psi
Tensile Modulus	ISO 527	339,388 psi
Shearing Strength	ISO 527	2,437 psi
Durability - Resistance against rotting fungi	CEN/TS 15083-2	no attack by the test fungi, highest durability class 1 (very durable)
Durability against mold and wood discoloring fungi	EN 15534-1:2012	Durability against the wood discoloring fungi (very durable)
Durability against subterranean Termites	ASTM D3345-08	High Durability against subterranean Termites - nearly no weight loss
specific surface and volume resistances	DIN IEC 60093 measuring voltage 100 V	surface resistance $R_x=8,0 \cdot 10^{(13)} \Omega$ Specific surface resistance $\alpha=8,1 \cdot 10^{(14)} \Omega$ volume resistance $R_x=2,2 \cdot 10^{(13)} \Omega$ Specific volume resistance $\alpha=6,3 \cdot 10^{(14)} \Omega$

Resysta — Winner across the board



Green Product Award
Winner



reddot design award
winner 2012



reddot design award
winner 2016



reddot design award
winner 2017



MaterialPREIS2013



The Future Formula

is called Resysta

Rawmaterials used:



approx. 60 % rice husk + approx. 22% rock salt + approx. 18% mineral oil = Resysta



Resysta North America | 14350 SW 142 Ave, Miami | Florida 33186

Office 786.616.8633

info@resystausa.com | www.resystausa.com

All specifications provided are subject to our installation guidelines and appropriate use at outdoor exposure.

The installation guide may be adapted to technical progress without prior notice.

The current version can be downloaded at www.resystausa.com

Subject to alterations. Slight deviations in color, photos and graphics could occur due to printing process.