

NOTE

THIS DRAWING, AS AN INSTRUMENT OF SERVICE, IS THE PROPERTY OF
RESYSTA
AND AS SUCH MUST NOT BE REPRODUCED OR COPIED IN PART OR IN WHOLE WITHOUT THE PERMISSION OF THE AUTHOR.

BUTT JOINT
HORIZONTAL CLADDING
FOR HF LONG CLIP DETAIL

SPECIFICATION

TYPICAL DRAWING
DETAIL

CAD BY:

M.T.C.

CHECKED BY:

C.R.E.

SHEET CONTENT

ISOMETRIC VIEW

BLOW-UP DETAIL

SHEET SIZE

A3

DATE

03.01.23

DRAWING NO.

BJHCD-LC-01

REVISION

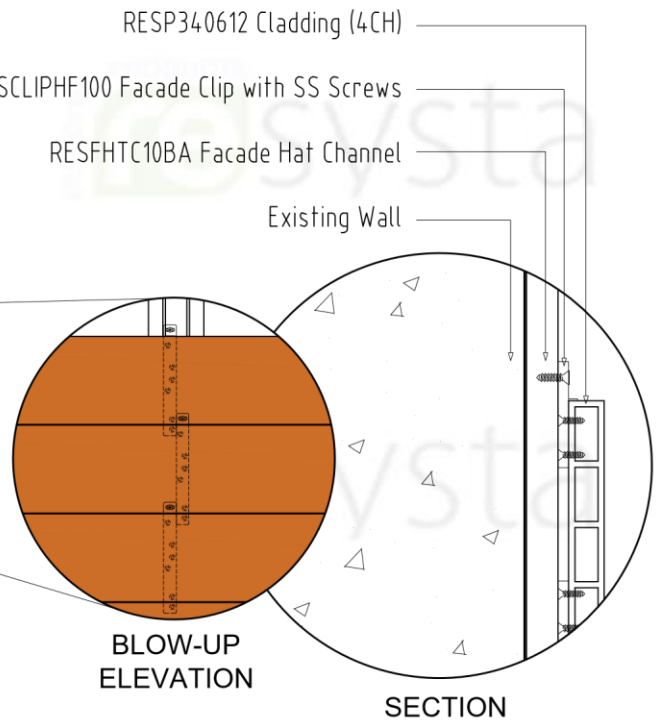
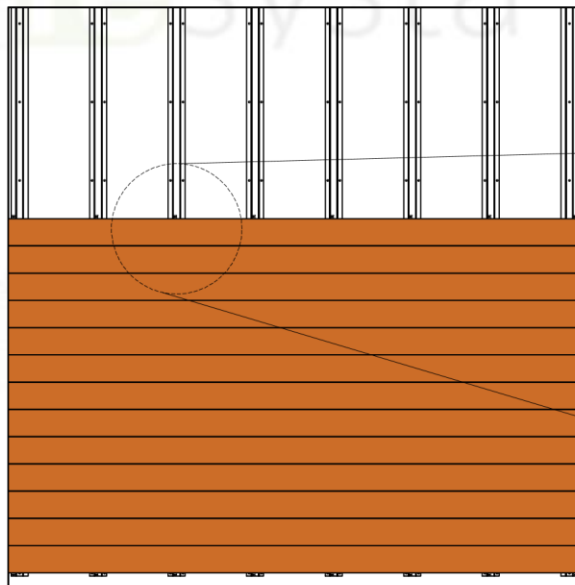
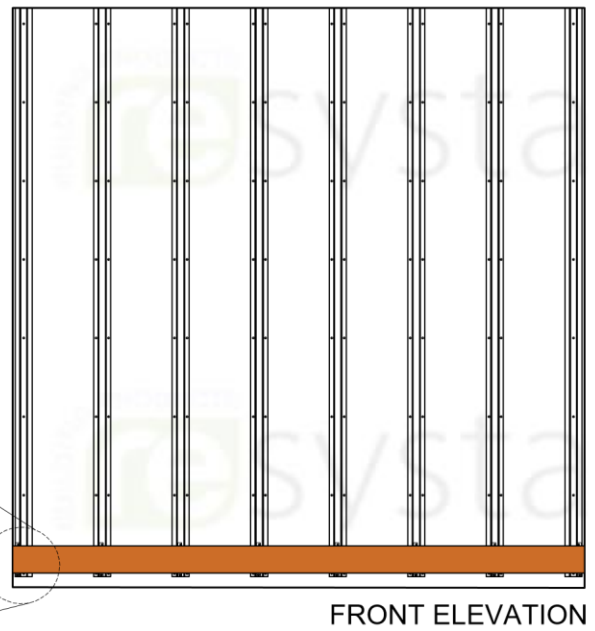
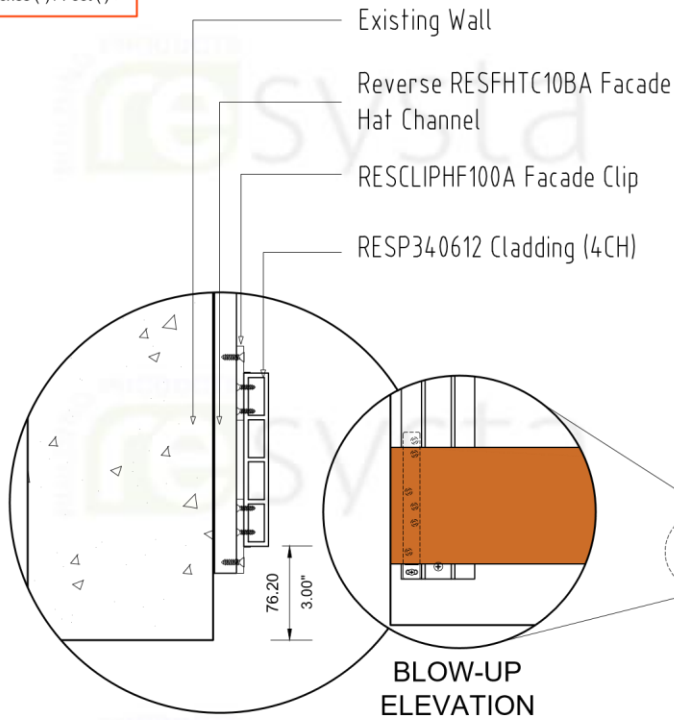
0

CONTINENT

RESYSTA
USA

DIMENSION LEGEND

Millimeter (mm)
Inches (") / Foot (')



FRONT ELEVATION

SUB-DETAIL
BJHCD 1.1

N.T.S

Note:

Each HF Clip requires 3 screws. Two are #8 x 1/2" SMS screws to attach the Clip to the Resyssta Wall Cladding board and one is to attach the wall cladding board with the clip to the battens.

BUILDING PRODUCTS
resyssta

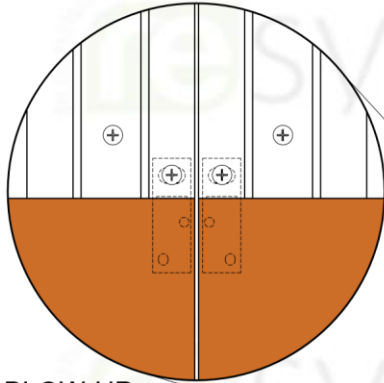
NOTE

THIS DRAWING AS AN INSTRUMENT OF SERVICE, IS THE PROPERTY OF RESYSTA AND AS SUCH MUST NOT BE REPRODUCED OR COPIED IN PART OR IN WHOLE WITHOUT THE PERMISSION OF THE AUTHOR.

TITLE	SHEET CONTENT	CONTINENT
BUTT JOINT HORIZONTAL CLADDING SUB-DETAIL	ELEVATION BLOW-UP DETAIL SECTION	RESYSTA USA
SPECIFICATION	DRAWING NO.	DATE
TYPICAL DRAWING DETAIL	BJHCD-02	03.01.23
	CAD BY: M.T.C.	CHECKED BY: C.R.E.

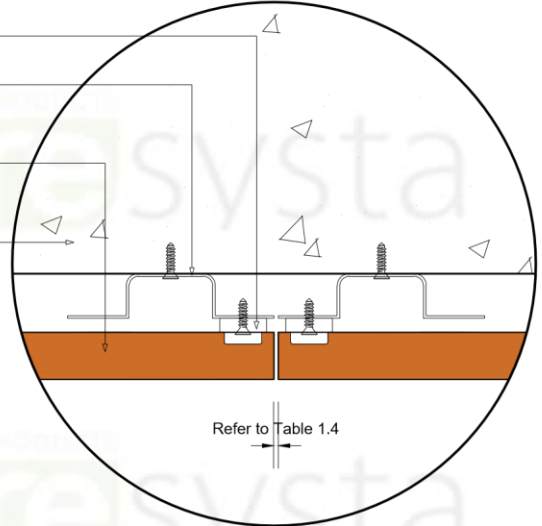
DIMENSION LEGEND

Millimeter (mm)
Inches (") / Foot (')



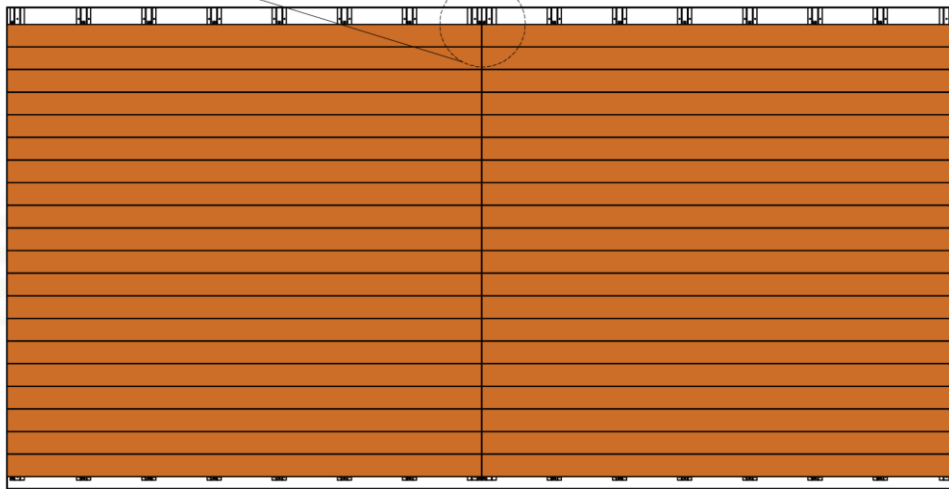
BLOW-UP
ELEVATION

RESCLIPHF100A Facade Clip
Reverse RESFHTC10BA
Facade Hat Channel
RESP340612 Cladding (4CH)
Existing Wall



Refer to Table 1.4

TOP VIEW



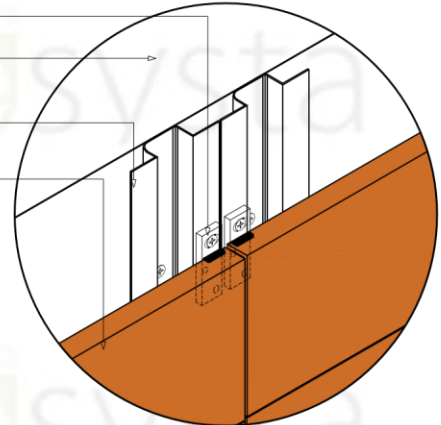
FRONT ELEVATION

SUB-DETAIL

BJHCD 1.2

N.T.S

RESCLIPHF100A Facade Clip
Existing Wall
Reverse RESFHTC10BA
Facade Hat Channel
RESP340612 Cladding (4CH)



ISOMETRIC
VIEW

Table 1.4 "Resysta Expansion"

Resysta Wall Cladding Board Gap Guide					
	Gap of Wall Cladding Board				Multi Board Gap
Temperature at Installation	Below 30°F	60°F	90°F	120°F	
Amount for Wall cladding Profile - Length of 12 ft.	7/16"	5/16"	3/16"	0"	1/4"

Note :

This is an option for installation using 3 or more boards abutted end-to-end. When connecting wall cladding boards at the ends, please consider Resysta Expansion.

BUILDING PRODUCTS
resysta

NOTE

THIS DRAWING AS AN INSTRUMENT OF SERVICE, IS THE PROPERTY OF RESYSTA AND AS SUCH MUST NOT BE REPRODUCED OR COPIED IN PART OR IN WHOLE WITHOUT THE PERMISSION OF THE AUTHOR.

TITLE
BUTT JOINT
HORIZONTAL CLADDING
SUB-DETAIL

SPECIFICATION
TYPICAL DRAWING DETAIL

SHEET CONTENT
ELEVATION
BLOW-UP DETAIL
TOP VIEW

DRAWING NO.

CAD BY:

M.T.C.

CONTINENT

RESYSTA
USA

DATE

03.01.23

CHECKED BY:

C.R.E

DIMENSION LEGEND

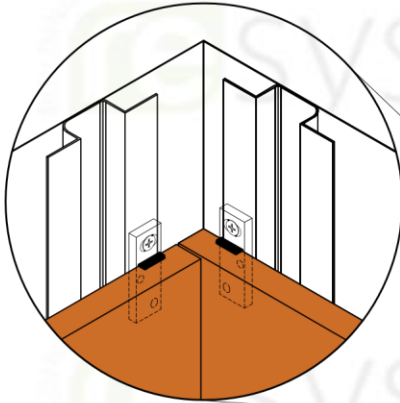
Millimeter (mm)
Inches (") / Foot (')

Reverse RESFHTC10BA
Facade Hat Channel

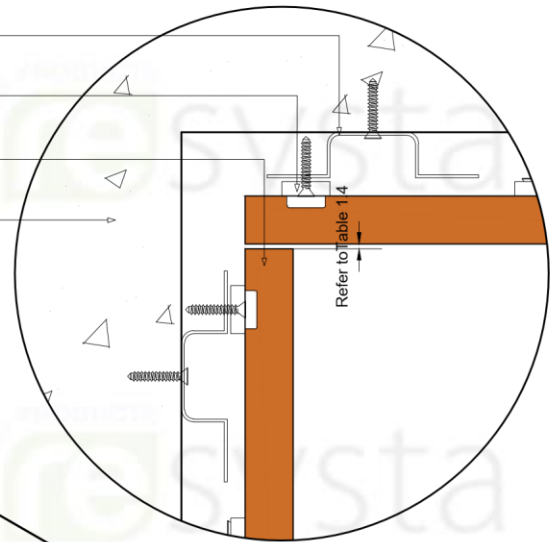
RESCLIPIHF100A Facade Clip

RESP340612 Cladding (4CH)

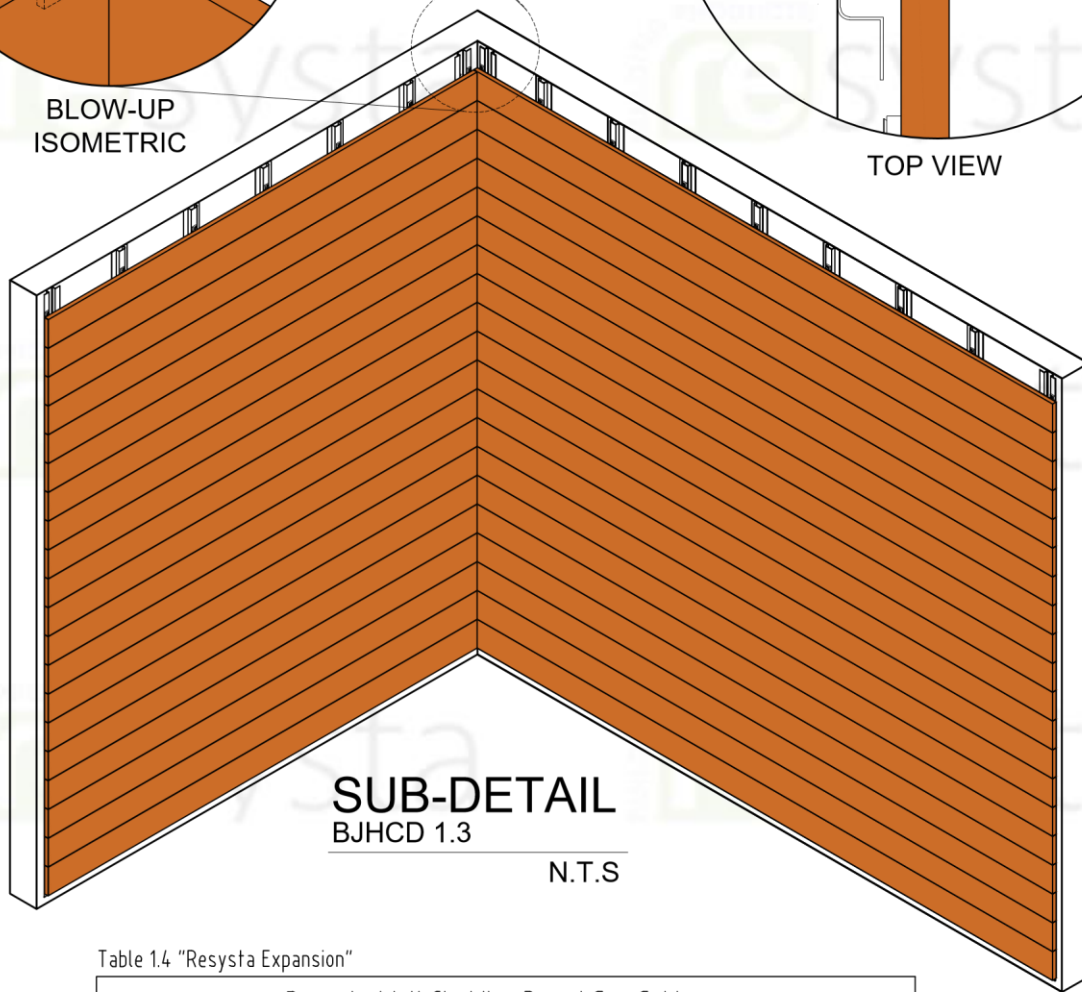
Existing Wall



BLOW-UP
ISOMETRIC



TOP VIEW



SUB-DETAIL
BJHCD 1.3

N.T.S

ISOMETRIC
VIEW

Table 1.4 "Resysta Expansion"

Resysta Wall Cladding Board Gap Guide					
Temperature at Installation	Gap of Wall Cladding Board				Multi Board Gap
	Below 30°F	60°F	90°F	120°F	
Amount for Wall cladding Profile - Length of 12 ft.	7/16"	5/16"	3/16"	0"	1/4"

Note :

When connecting wall cladding boards at the ends, please consider Resysta Expansion.

BUILDING PRODUCTS
resysta

NOTE

THIS DRAWING AS AN INSTRUMENT OF SERVICE, IS THE PROPERTY OF RESYSTA AND AS SUCH MUST NOT BE REPRODUCED OR COPIED IN PART OR IN WHOLE WITHOUT THE PERMISSION OF THE AUTHOR.

TITLE
BUTT JOINT
HORIZONTAL CLADDING
SUB-DETAIL

SPECIFICATION
TYPICAL DRAWING DETAIL

SHEET CONTENT
ISOMETRIC VIEW
BLOW-UP DETAIL
TOP VIEW

DRAWING NO.
BJHCD-04
CAD BY:
M.T.C.

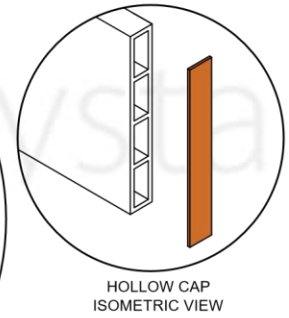
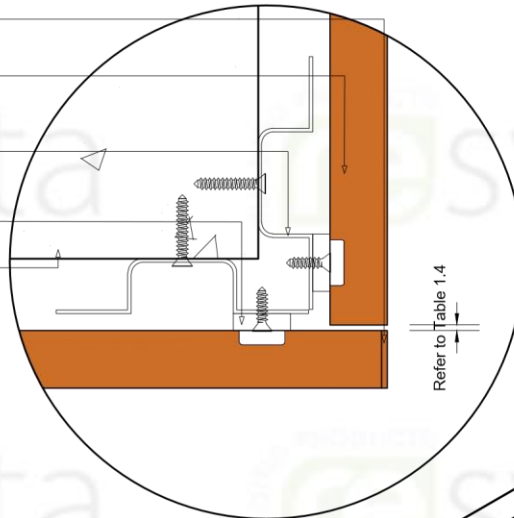
CONTINENT
RESYSTA
USA

DATE
03.01.23
CHECKED BY:
C.R.E.

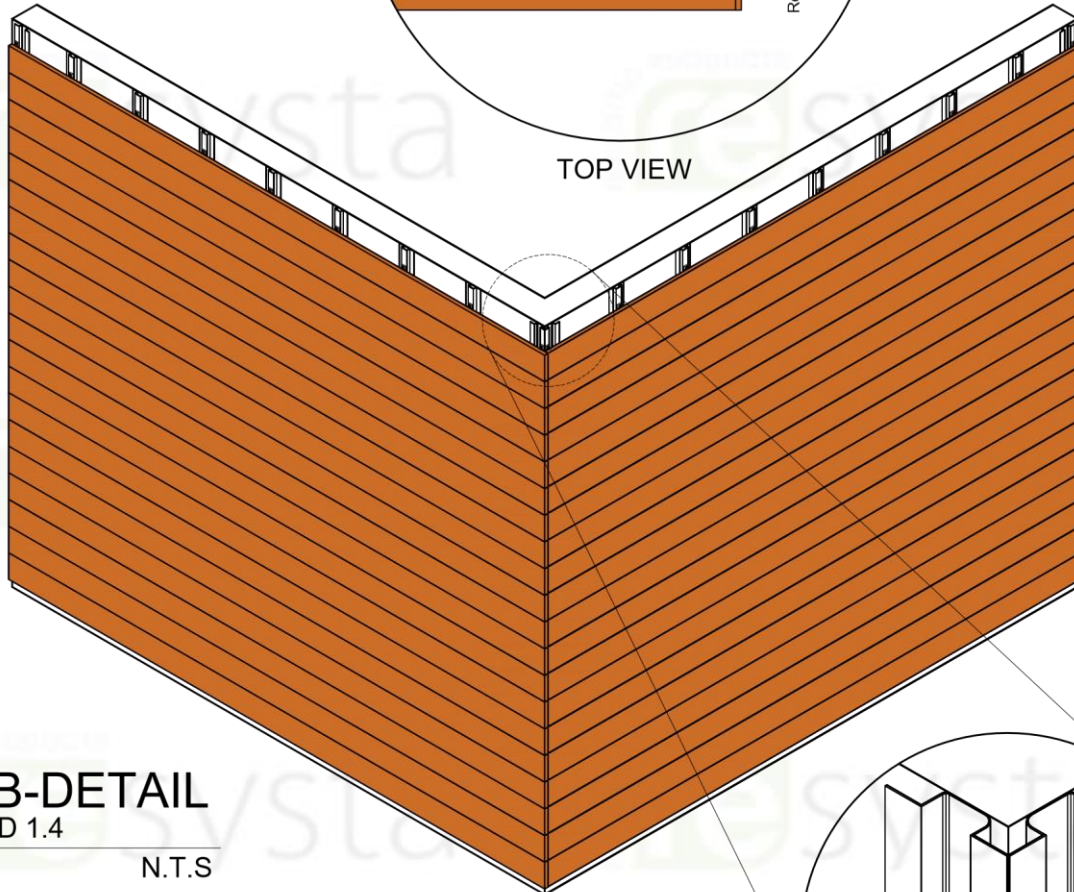
DIMENSION LEGEND

Millimeter (mm)
Inches (") / Foot (')

Hollow Cap
RESP340612 Cladding (4CH)
Reverse RESFHTC10BA
Facade Hat Channel
RESCLIPHF100A Facade Clip
Existing Wall



HOLLOW CAP
ISOMETRIC VIEW



TOP VIEW

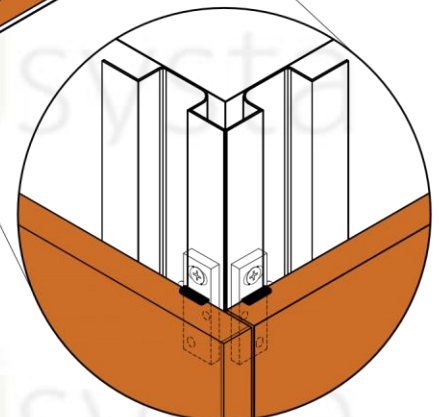
ISOMETRIC VIEW

SUB-DETAIL BJHCD 1.4

N.T.S

Table 1.4 "Resysta Expansion"

Resysta Wall Cladding Board Gap Guide					
	Gap of Wall Cladding Board				Multi Board Gap
Temperature at Installation	Below 30°F	60°F	90°F	120°F	
Amount for Wall cladding Profile - Length of 12 ft.	7/16"	5/16"	3/16"	0"	1/4"



BLOW-UP
ISOMETRIC

Note :

Remove adhesive strip cover film. Center Hollow Cap on the end of the plank and apply with firm pressure all around the center supports.

BUILDING PRODUCTS
resysta

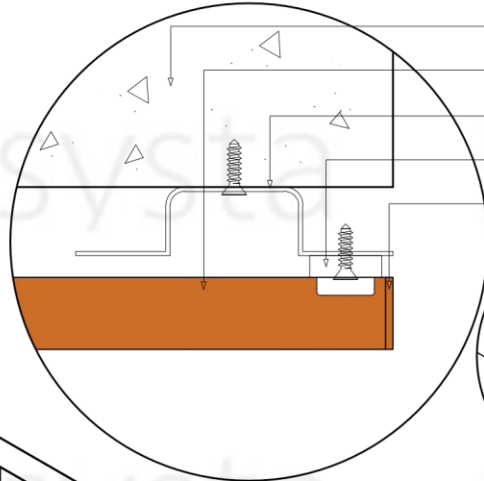
NOTE

THIS DRAWING AS AN INSTRUMENT OF SERVICE, IS THE PROPERTY OF RESYSTA AND AS SUCH MUST NOT BE REPRODUCED OR COPIED IN PART OR IN WHOLE WITHOUT THE PERMISSION OF THE AUTHOR.

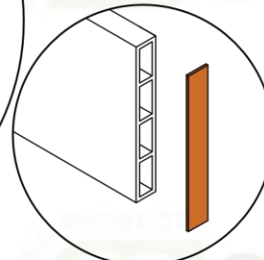
TITLE	SHEET CONTENT	CONTINENT
BUTT JOINT HORIZONTAL CLADDING SUB-DETAIL	ISOMETRIC VIEW BLOW-UP DETAIL TOP VIEW	RESYSTA USA
SPECIFICATION	DRAWING NO.	DATE
TYPICAL DRAWING DETAIL	BJHCD-05	03.01.23
	CAD BY:	CHECKED BY:
	M.T.C.	C.R.E

DIMENSION LEGEND

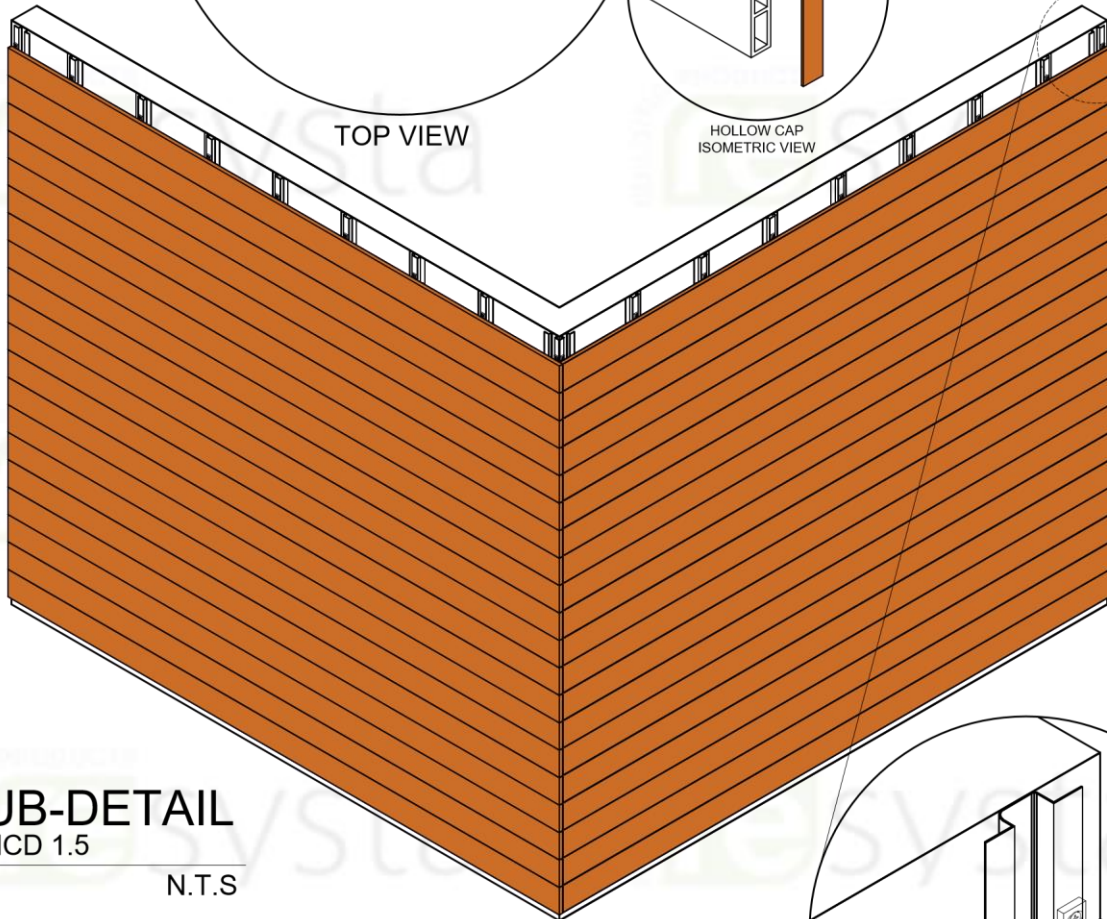
Millimeter (mm)
Inches (") / Foot (')



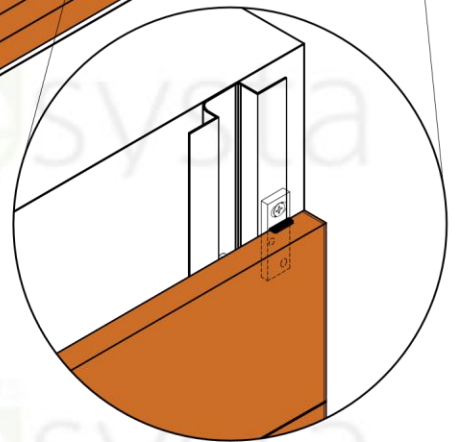
TOP VIEW



HOLLOW CAP
ISOMETRIC VIEW



ISOMETRIC VIEW



BLOW-UP ISOMETRIC

SUB-DETAIL BJHCD 1.5

N.T.S

Table 1.4 "Resysta Expansion"

Resysta Wall Cladding Board Gap Guide					
	Gap of Wall Cladding Board				Multi Board Gap
Temperature at Installation	Below 30°F	60°F	90°F	120°F	
Amount for Wall cladding Profile - Length of 12 ft.	7/16"	5/16"	3/16"	0"	1/4"

Note :

Be sure that all surfaces are clean and free of debris such as dust, dirt, oils and paints. Remove adhesive strip cover film. Center Hollow Cap on the end of the plank and apply with firm pressure all around the center supports.

BUILDING PRODUCTS
resysta

NOTE

THIS DRAWING AS AN INSTRUMENT OF SERVICE, IS THE PROPERTY OF RESYSTA AND AS SUCH MUST NOT BE REPRODUCED OR COPIED IN PART OR IN WHOLE WITHOUT THE PERMISSION OF THE AUTHOR.

TITLE

BUTT JOINT
HORIZONTAL CLADDING
SUB-DETAIL

SPECIFICATION

TYPICAL DRAWING DETAIL

SHEET CONTENT

ISOMETRIC VIEW
BLOW-UP DETAIL
TOP VIEW

DRAWING NO.

BJHCD-06

CAD BY:

M.T.C.

CONTINENT

RESYSTA
USA

DATE

03.01.23

CHECKED BY:

C.R.E